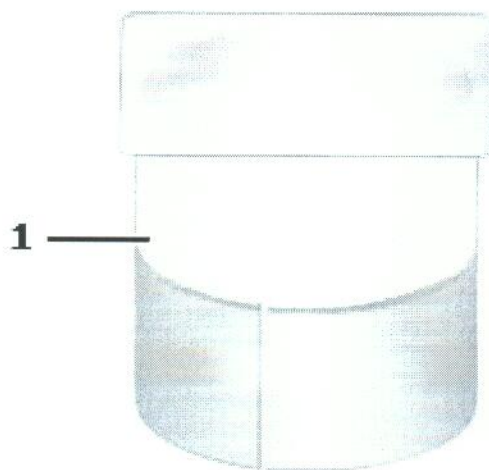


1

Consumables

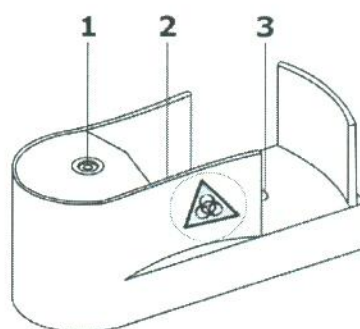
Sensor cassette pack with sensor cassette



1

Sensor cassette pack

The sensor cassette comes in a sensor cassette pack. For further information about how to remove the sensor cassette from the sensor cassette pack, see *Sensor cassette* in section *Replacements* in chapter 7: *Replacements* in this manual.



Sensor cassette:

- | | |
|---|-------------------------------|
| 1 | Reference lid |
| 2 | Electrical contact to sensors |
| 3 | Oxygen sensor |

Solution pack

1

Biohazard label

Before installation of the solution pack, remove the top cover of the label on top of the solution pack, so that the biohazard label appears, to remind you that the solution pack must be disposed of as infectious waste after use.

2

Safety pin

To activate a new solution pack, remove the safety pin and press the lid down (see *Solution pack* in section *Replacements* in chapter 7: *Replacements* in this manual for further information).

Solution pack

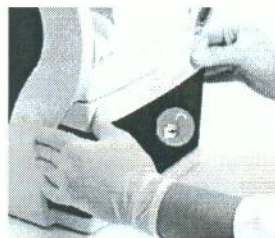
Replacing solution pack

- | Step | Action |
|------|---|
| 1. | Press Menu > Analyzer status > Replacements > Replace > Replace solutions. |
| 2. | Lift the inlet to the capillary position and wait for the solution pack to unlock. |
| 3. | Remove the used solution pack and dispose of it as infectious waste according to the regulations in your institution. |
| 4. | Activate the new solution pack by pulling out the safety pin. |
| 5. | Press the lid firmly down by pressing the elevated side (where the safety pin was) down until the side taps click into the side tap holes. |
| 6. | Remove the top layer of the label on top of the solution pack, so that the biohazard label appears to remind you that the solution pack after use must be disposed of as infectious waste. |
| 7. | Insert the new solution pack by pushing it fully into place in the analyzer until a click is heard. |
| 8. | When prompted by the analyzer, close the inlet. |
| 9. | Enter operator name and any notes, using the Keyboard or the Note button to display the keyboard and to enter the operator name/note. Confirm the entry with the Enter button on the keyboard. |



Side taps holes

Side taps





10. Press **OK** to restart the analyzer.

NOTICE: By default a QC will be performed after a solution pack replacement. However, if this function has been deactivated, it is recommended to perform a built-in QC after solution pack replacements to assure that the consumables have not been damaged.

Manual release of the solution pack

In emergency situations, e.g. during a power failure or if for some reason the analyzer is down, it is possible to release the solution pack by pressing the latch on the rear of the analyzer. See *Rear* in section *Hardware*, chapter 2: *What is What*.


Sensor cassette

From the factory, the sensor cassette comes dry-stored in the sensor cassette pack to ensure a long shelf life. Therefore, a conditioning process where rinse solution is released to the sensors must occur before the sensor cassette can be used for measurements.

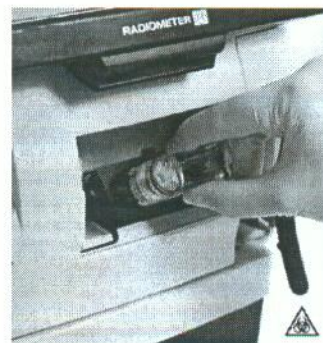
When conditioning the sensor cassette in the analyzer, it typically takes 2-4 hours (including a calibration) for the sensor cassette to be ready for measurement.

If the conditioning by the analyzer is interrupted by the user by pressing **Exit conditioning**, some of the parameters may subsequently have a "?" in front of them.

Replacing sensor cassette

Step	Action
1.	Press Menu > Analyzer status > Replacements > Replace > Replace sensors .
2.	Register the sensor cassette <ul style="list-style-type: none">• by scanning the barcode of the sensor cassette pack (see <i>Barcode reader</i> in section <i>Hardware</i>, chapter 2: <i>What is what</i>).• by entering the barcode manually by pressing the keyboard button and entering the missing numbers of the barcode of the sensor cassette. Confirm with Enter and press Continue. If no barcode is available, press No Barcode in the "Registration" field. Thereafter, press the  button. The sensor cassette compartment opens.

3. Remove the old sensor cassette by pulling it upwards and out of the compartment with thumb and index finger. Dispose of the used sensor cassette as infectious waste according to the regulations in your institution.



4. Remove the foil on top of the sensor cassette pack by pulling the foil upwards and off.



5. Screw off the revealed lid of sensor cassette pack, by screwing it off counterclockwise.



6. Remove the new sensor cassette by pulling it out of the sensor cassette pack with thumb and index finger.



- 6.
7. Holding the new sensor cassette with the thumb and index finger, press the new sensor cassette firmly into the sensor cassette seat in the sensor compartment until resistance is met.



8. Press **Proceed**. The sensor cassette compartment closes and a new **Replacing sensor cassette** screen appears.
9. Enter operator name and any notes, using the **Keyboard** or the **Note** button to display the keyboard and to enter the operator name/note. Confirm the entry with the **Enter** button on the keyboard.
10. Press **OK** to finish or press **Replace solutions** to replace the solution pack too – see *Solution pack* earlier in this chapter.
11. Wait until the restart sequence has been finished.

- NOTICES:**
- By default, a QC will be performed after a sensor cassette replacement. However, if this function has been deactivated, it is recommended to perform a built-in QC after sensor cassette replacements to assure that the consumables have not been damaged.
 - It is only recommended to remove the sensor cassette from the sensor cassette compartment if you want to replace the old sensor cassette with a new one. If, however, it becomes necessary to remove it for a short period of time (e.g. during a troubleshooting procedure etc.), the sensor cassette must be placed back into the sensor cassette compartment within 2 hours. During removal it must be placed in an upright position and not on the side:

